

# UW-River Falls

## *Falcon Basketball*



2006-07



### General Information

**School:** UW-River Falls  
**Location:** River Falls, Wis.  
**Address:** 410 S. Third St.  
River Falls, WI 54022  
**Chancellor:** Don Betz  
**Founded:** 1874  
**Enrollment:** 6,100  
**Nickname:** Falcons  
**School colors:** Red and White  
**Arena/capacity:** Karges Center / 1,800  
**Affiliation:** NCAA Div. III  
**Conference:** Wisconsin Intercollegiate Athletic  
**Athletic director:** Rick Bowen (715-425-3246)  
**Athletic trainer:** Gary Elotanta (715-425-3130)  
**Sports information:** Jim Thies (715-425-3846)

### Coaching Staff

**Head Coach:** Jeff Berkof  
**Alma Mater:** UW-River Falls (1994)  
**Record at School:** 0-0  
**Career Record:** 0-0  
**Vs. William Penn:** 0-0  
**Vs. Bethel:** 0-0  
**Vs. Dakota State:** 0-0  
**Assistant Coaches:** Pedro Renta, Kevin Landrum,  
Kurran Sagan  
**Managers:** Amanda Collova, Andy Thompson, Jake  
Myers, Ryan Ervin, Anthony Anderson

### Team Information

**Overall 2006 record:** 6-19  
**WIAC record, finish:** 5-11 (7th place)  
**Home record:** 3-8  
**Road record:** 3-9  
**Neutral Record:** 0-2

### Upcoming Games

#### Game 1

**River Falls (0-0, 0-0 WIAC)**

vs.

**William Penn (4-1, 0-0 MCC)**

**Location: St. Paul, Minn.**

**Gus Young Arena, Bethel University**

**Friday, Nov. 17, 6 p.m.**

#### Game 2

**River Falls (0-0, 0-0 WIAC)**

vs.

**Bethel University (0-0, 0-0 MIAC)**

or

**Dakota State (1-3, 0-0 DAC)**

**Location: St. Paul, Minn.**

**Gus Young Arena, Bethel University**

**Saturday, Nov. 18, 6 or 8 p.m.**

### 2006-07 Falcon Roster

| Name             | Pos. | Hgt. | Yr. | PPG | RPG | APG |
|------------------|------|------|-----|-----|-----|-----|
| Maurice Baker    | G    | 6-2  | Fr. | -   | -   | -   |
| Deonte Compton   | G    | 5-10 | Fr. | -   | -   | -   |
| Courtney Davis   | G    | 6-2  | Jr. | -   | -   | -   |
| Jesse Elling     | G    | 6-0  | So. | .9  | .5  | .1  |
| Scott Kelly      | F    | 6-5  | Jr. | 4.2 | 2.0 | .8  |
| Jontae Koonkaew  | G    | 5-8  | Fr. | -   | -   | -   |
| Nicholas Myers   | G    | 6-3  | Jr. | -   | -   | -   |
| Erik Olson       | G    | 6-4  | So. | 2.9 | 1.0 | .4  |
| Tim Pearson      | F    | 6-5  | Jr. | 2.8 | 1.4 | .7  |
| Nate Robertson   | F    | 6-7  | Fr. | -   | -   | -   |
| Cory Rondeau     | F    | 6-7  | Jr. | 1.3 | 1.5 | .2  |
| Ryan Thompson    | G    | 6-0  | Jr. | 6.1 | 1.8 | 4.5 |
| Rory Trimbo      | F    | 6-6  | So. | .8  | .8  | .0  |
| Jake Voeltz      | F    | 6-4  | Fr. | -   | -   | -   |
| Anthony Williams | G    | 6-1  | Fr. | -   | -   | -   |

## 2006-07 Falcon Schedule

| Date | Opponent         | Time/Result |
|------|------------------|-------------|
| N 17 | vs. William Penn | 6 p.m.      |
| N 18 | TBD              | TBD         |
| N 25 | Macalester       | 7 p.m.      |
| N 29 | at Superior*     | 7 p.m.      |
| D 2  | Stevens Point*   | 3 p.m.      |
| D 6  | at Eau Claire*   | 6 p.m.      |
| D 9  | Platteville*     | 1 p.m.      |
| D 12 | Bethany Lutheran | 7 p.m.      |
| D 14 | at Crown         | 7:30 p.m.   |
| D 16 | at Con.-St. Paul | 7 p.m.      |
| D 29 | North Central    | 8 p.m.      |
| D 30 | TBD              | TBD         |
| J 2  | Finlandia        | 8 p.m.      |
| J 6  | at Whitewater*   | 1 p.m.      |
| J 10 | Stout8           | 7 p.m.      |
| J 13 | Oshkosh*         | 1 p.m.      |
| J 17 | La Crosse*       | 7 p.m.      |
| J 20 | at Stevens Point | 3 p.m.      |
| J 24 | Superior*        | 7 p.m.      |
| J 27 | at Oshkosh*      | 1 p.m.      |
| J 31 | at Stout*        | 7 p.m.      |
| F 3  | at Platteville*  | 1 p.m.      |
| F 7  | Eau Claire*      | 6 p.m.      |
| F 10 | Whitewater*      | 1 p.m.      |
| F 14 | at La Crosse8    | 7 p.m.      |
| F 20 | WIAC Tournament  | TBD         |

\* WIAC Games

# Jeff Berkhof

## Head Coach

Jeff Berkhof takes over as head men's interim basketball coach at UW-River Falls for the 2006-07 season.

Berkhof is no stranger to Falcon basketball. He was former Coach Rick Bowen's top assistant for the past nine seasons and a member of the Falcon coaching staff dating back to the 1994-95 season.

During his 12-year span as an assistant coach, Berkhof has held many responsibilities. He has coordinated the Falcon recruiting efforts, directed the Falcon summer basketball camps, and organized scouting / film exchange. He has also had numerous administrative duties and on the floor coaching responsibilities.

While an assistant to the men's basketball program, Berkhof was also the head women's golf coach at UW River Falls from 2002-06. He was named the WIAC women's golf Coach of the Year in 2004 after leading the golf team to a third place finish in the WIAC meet.

Before joining the coaching ranks, Berkhof spent two seasons playing for the Falcons in 1992-94. During his senior season, he was selected to the 1994 All-WSUC team and was chosen Co-MVP and Co-Captain by his teammates. Before coming to UW-River Falls, Berkhof played two years at Worthington Junior College, in Worthington, Minn. In 1997, he was inducted into the Minnesota Junior College Athletic Hall of Fame. Prior to his time at Worthington JC, he attended South Dakota State University in Brookings, S.D., and was a member of the SDSU football squad.

The Hills, Minn., native received his masters of education degree in sport management at the University of Minnesota in 2005. He completed his bachelor of science degree at UW-River Falls with a major in physical education and a minor in athletic coaching in 1994. Berkhof is an instructor in the health and human performance department at UW-River Falls.

Jeff and his wife Jill reside in Hudson. Jill is a UW-River Falls alum and fifth grade teacher at Lake Elmo, Minn. They have one son, Benjamin, who was born in June of 2004.



**Pedro Renta**  
Assistant Coach



**Kevin Landrum**  
Assistant Coach



**Kurran Sagan**  
Assistant Coach



**Visit the Falcons on The Web**

**[www.uwrf.edu/sports/sports0607/mbb\\_menu.htm](http://www.uwrf.edu/sports/sports0607/mbb_menu.htm)**

# 2006-07 Falcon Basketball Schedule

| Day       | Date    | Opponent          | Site | Time/Result | Overall Record/WIAC |
|-----------|---------|-------------------|------|-------------|---------------------|
| Friday    | Nov. 17 | William Penn      | N    | 6 p.m.      |                     |
| Saturday  | Nov. 18 | TBD               | TBD  | TBD         |                     |
| Saturday  | Nov. 25 | Macalester        | H    | 7 p.m.      |                     |
| Wednesday | Nov. 29 | UW-Superior*      | A    | 7 p.m.      |                     |
| Saturday  | Dec. 2  | UW-Stevens Point* | H    | 3 p.m.      |                     |
| Wednesday | Dec. 6  | UW-Eau Claire*    | A    | 6 p.m.      |                     |
| Saturday  | Dec. 9  | UW-Platteville*   | H    | 1 p.m.      |                     |
| Tuesday   | Dec. 12 | Bethany Lutheran  | H    | 7 p.m.      |                     |
| Thursday  | Dec. 14 | Crown             | A    | 7:30 p.m.   |                     |
| Saturday  | Dec. 16 | Con.-St. Paul     | A    | 7 p.m.      |                     |
| Friday    | Dec. 29 | North Central     | H    | 6 p.m.      |                     |
| Saturday  | Dec. 30 | TBD               | H    | TBD         |                     |
| Tuesday   | Jan. 2  | Finlandia         | H    | 8 p.m.      |                     |
| Saturday  | Jan. 6  | UW-Whitewater*    | A    | 1 p.m.      |                     |
| Wednesday | Jan. 10 | UW-Stout*         | H    | 7 p.m.      |                     |
| Saturday  | Jan. 13 | UW-Oshkosh*       | H    | 1 p.m.      |                     |
| Wednesday | Jan. 17 | UW-La Crosse*     | H    | 7 p.m.      |                     |
| Saturday  | Jan. 20 | UW-Stevens Point* | A    | 3 p.m.      |                     |
| Wednesday | Jan. 24 | UW-Superior*      | H    | 7 p.m.      |                     |
| Saturday  | Jan. 27 | UW-Oshkosh*       | A    | 1 p.m.      |                     |
| Wednesday | Jan. 31 | UW-Stout*         | A    | 7 p.m.      |                     |
| Saturday  | Feb. 3  | UW-Platteville*   | A    | 1 p.m.      |                     |
| Wednesday | Feb. 7  | UW-Eau Claire*    | H    | 6 p.m.      |                     |
| Saturday  | Feb. 10 | UW-Whitewater*    | H    | 1 p.m.      |                     |
| Wednesday | Feb. 14 | UW-La Crosse*     | A    | 7 p.m.      |                     |
| Monday    | Feb. 20 | WIAC Playoffs     | TBD  | TBD         |                     |
| Wednesday | Feb. 22 | WIAC Semifinals   | TBD  | TBD         |                     |
| Saturday  | Feb. 25 | WIAC Finals       | TBD  | TBD         |                     |

^ WIAC Games

## UWRF SPORTS INFORMATION

**Director:** Jim Thies

**Phone:** 715-425-3846

**Home:** 715-386-9252

**Cell:** 715-222-1455

**Fax:** 715-425-4486

**E-mail:** james.g.thies@uwrf.edu

**Athletics Web:** www.uwrf.edu/sports

**Basketball Web Site:** www.uwrf.edu/sports/sports0607/mbb\_menu.htm



**Visit the Falcons on The Web**

**[www.uwrf.edu/sports/sports0607/mbb\\_menu.htm](http://www.uwrf.edu/sports/sports0607/mbb_menu.htm)**

## 2006-07 FALCON NUMERICAL ROSTER

| No. | Name             | Pos. | Hgt. | Wgt. | Yr. | Hometown/Last Team           |
|-----|------------------|------|------|------|-----|------------------------------|
| 3   | Erik Olson       | G    | 6-4  | 185  | So. | South Stratford, VT/Hanover  |
| 4   | Ryan Thompson    | G    | 6-0  | 190  | Jr. | Viroqua, WI                  |
| 5   | Scott Kelly      | F    | 6-5  | 220  | Jr. | Hastings, MN                 |
| 10  | Maurice Baker    | G    | 6-2  | 170  | Fr. | Riverside, CA/Canyon Springs |
| 12  | Jontae Koonkaew  | G    | 5-8  | 165  | Fr. | Apple Valley, MN             |
| 15  | Nicholas Myers   | G    | 6-3  | 180  | Jr. | Rosemount, MN/Mesabi CC      |
| 21  | Jesse Elling     | G    | 6-0  | 185  | So. | River Falls, WI              |
| 22  | Anthony Williams | G    | 6-1  | 215  | Fr. | Cottage Grove, MN/Park       |
| 23  | Deonte Compton   | G    | 5-10 | 170  | Fr. | Minneapolis, MN/South        |
| 32  | Tim Pearson      | F    | 6-5  | 190  | Jr. | Eau Claire, WI/Memorial      |
| 33  | Cory Rondeau     | F    | 6-7  | 230  | Jr. | Grand Rapids, MN             |
| 34  | Courtney Davis   | G    | 6-2  | 200  | Jr. | Milwaukee, WI/Mesabi CC      |
| 35  | Jake Voeltz      | F    | 6-4  | 200  | Fr. | River Falls, WI              |
| 40  | Rory Trimbo      | F    | 6-6  | 250  | So. | Belle Plaine, MN             |
| 41  | Nate Robertson   | F    | 6-7  | 220  | Fr. | Forest Lake, MN              |

**Head coach:** Jeff Berkhof

**Assistant coaches:** Pedro Renta, Kevin Landrum, Kurran Sagan

**Managers:** Amanda Collova, Andy Thompson, Jake Myers, Ryan Ervin, Anthony Anderson

### 2006-07 FALCON ALPHABETICAL ROSTER

| No | Name             | Pos. | Hgt. | Yr. | Hometown/Last Team           |
|----|------------------|------|------|-----|------------------------------|
| 10 | Maurice Baker    | G    | 6-2  | Fr. | Riverside, CA/Canyon Springs |
| 23 | Deonte Compton   | G    | 5-10 | Fr. | Minneapolis, MN/South        |
| 34 | Courtney Davis   | G    | 6-2  | Jr. | Milwaukee, WI/Mesabi CC      |
| 21 | Jesse Elling     | G    | 6-0  | So. | River Falls, WI              |
| 5  | Scott Kelly      | F    | 6-5  | Jr. | Hastings, MN                 |
| 12 | Jontae Koonkaew  | G    | 5-8  | Fr. | Apple Valley, MN             |
| 15 | Nicholas Myers   | G    | 6-3  | Jr. | Rosemount, MN/Mesabi CC      |
| 3  | Erik Olson       | G    | 6-4  | So. | South Stratford, VT/Hanover  |
| 32 | Tim Pearson      | F    | 6-5  | Jr. | Eau Claire, WI/Memorial      |
| 41 | Nate Robertson   | F    | 6-7  | Fr. | Forest Lake, MN              |
| 33 | Cory Rondeau     | F    | 6-7  | Jr. | Grand Rapids, MN             |
| 4  | Ryan Thompson    | G    | 6-0  | Jr. | Viroqua, WI                  |
| 40 | Rory Trimbo      | F    | 6-6  | So. | Belle Plaine, MN             |
| 35 | Jake Voeltz      | F    | 6-4  | Fr. | River Falls, WI              |
| 22 | Anthony Williams | G    | 6-1  | Fr. | Cottage Grove, MN/Park       |

### PRONOUNCIATION GUIDE

Jontae Koonkaew - JOHN tay COON cow  
 Deonte Compton - dee ON tay COMP ton  
 Cory Rondeau - RON dow  
 Jake Voeltz - VOLTS  
 Rory Trimbo - TRIM bow

### UW-River Falls

#### WIAC Champions

1916, 1917, 1920, 1923, 1927  
 1929, 1930, 1936, 1947, 1949  
 1950, 2004

**Visit the Falcons on The Web**

**[www.uwrf.edu/sports/sports0607/mbb\\_menu.htm](http://www.uwrf.edu/sports/sports0607/mbb_menu.htm)**

# 2006 WIAC Basketball

## 2006 FINAL WIAC STANDINGS

|               | WIAC<br>W-L | Overall<br>W-L |
|---------------|-------------|----------------|
| Whitewater    | 13-3        | 23-6           |
| Stout         | 12-4        | 22-7           |
| Stevens Point | 11-5        | 17-10          |
| La Crosse     | 10-6        | 20-8           |
| Oshkosh       | 10-6        | 17-9           |
| Platteville   | 7-9         | 12-13          |
| River Falls   | 5-11        | 6-19           |
| Eau Claire    | 4-12        | 12-14          |
| Superior      | 0-16        | 5-20           |

### Upcoming games

#### Friday, Nov. 17

River Falls vs. Willilam Penn, 6 p.m.

Viterbo at Platteville, 7 p.m.

Finlandia at Superior, 7 p.m.

Martin Luther at Whitewater, 7 p.m.

Eau Claire vs. Alma, 4 p.m.

#### Saturday, Nov. 18

River Falls vs. Bethel/Dakota State, 6, 8 p.m.

La Crosse at Loras, 7:30 p.m.

Stevens Point at Carroll, 7 p.m.

Buena Vista at Platteville, 7 p.m.

Nebraska Wesleyan vat Superior, 6 p.m.

Eau Claire at Manchester Tourney, TBD

#### Tuesday, Nov. 21

Viterbo at La Crosse, 6 p.m.

Oshkosh at Edgewood, 7 p.m.

Stevens Point at Lawrence, 7 p.m.

Stout at Bemidji, 7 p.m.

Northland at Superior, 7 p.m.

### Recent results

#### Friday, Nov. 3

Wisconsin 82, Stout 33 (Exhibition)

#### Wednesday, Nov. 8

Green Bay 75, La Crosse 53 (Exhibition)

Purdue 78, Platteville 46 (Exhibition)

### Preseason SID Poll

#### Team (First Place Votes)

- Whitewater (7)
- Oshkosh
- Stevens Point
- Stout (2)
- La Crosse
- Platteville
- Eau Claire
- River Falls
- Superior

#### 2005-06 Record

- 23-6, 13-3
- 17-9, 10-6
- 17-10, 11-5
- 22-7, 12-4
- 20-8, 10-6
- 12-13, 7-9
- 12-14, 4-12
- 6-19, 5-11
- 5-20, 0-16



## 2005-06 River Falls Record When....

|                                |      |
|--------------------------------|------|
| Leading at Halftime            | 2-6  |
| Trailing at Halftime           | 4-12 |
| Tied at Halftime               | 0-1  |
| Games Decided by 1-4 Points    | 2-5  |
| Games Decided by 5-9 Points    | 2-6  |
| Games Decided by 10+ Points    | 2-8  |
| Scoring 70-79 Points           | 2-1  |
| Scoring 60-69 Points           | 2-6  |
| Scoring 45-59 Points           | 2-12 |
| Opponents Score 80-89 Points   | 0-3  |
| Opponents Score 70-79 Points   | 0-7  |
| Opponents Score 60-69 Points   | 2-3  |
| Opponents Score 50-59 Points   | 4-6  |
| Hoeg Leads Team in Scoring     | 3-12 |
| Zylstra Leads Team in Scoring  | 1-5  |
| Kossoris Leads Team in Scoring | 1-0  |
| Thompson Leads Team in Scoring | 0-1  |
| Pearson Leads Team in Scoring  | 1-0  |
| Olson Leads Team in Scoring    | 0-1  |

### D3Hoops.Com Preseason Poll

| No. | School                 | Record(05-06) | Points | Lt/Yr | Rank |
|-----|------------------------|---------------|--------|-------|------|
| 1   | Virginia Wesleyan (23) | 30-3          | 623    |       | 1    |
| 2   | Wooster (1)            | 26-4          | 538    |       | 9    |
| 3   | Amherst (1)            | 28-4          | 512    |       | 4    |
| 4   | UW-Whitewater          | 23-6          | 406    |       | 15   |
| 5   | Ohio Northern          | 21-6          | 397    |       | -    |
| 6   | Baldwin-Wallace        | 25-5          | 363    |       | 12   |
| 7   | William Paterson       | 23-8          | 355    |       | 24   |
| 8   | Calvin                 | 23-7          | 347    |       | 14   |
| 9   | St. Thomas             | 23-6          | 310    |       | 20   |
| 10  | Wittenberg             | 30-4          | 298    |       | 2    |
| 11  | Mississippi College    | 29-2          | 289    |       | 13   |
| 12  | Tufts                  | 23-7          | 251    |       | 22   |
| 13  | Lawrence               | 25-1          | 241    |       | 5    |
| 14  | Hope                   | 28-3          | 37     |       | 6    |
| 15  | Randolph-Macon         | 22-7          | 231    |       | -    |
| 16  | Lincoln                | 25-5          | 216    |       | 10   |
| 17  | Carroll                | 21-5          | 203    |       | 21   |
| 18  | Christopher Newport    | 20-8          | 191    |       | -    |
| 19  | North Central          | 22-6          | 182    |       | 19   |
| 20  | Occidental             | 20-6          | 178    |       | -    |
| 21  | Hampden-Sydney         | 18-8          | 160    |       | 20   |
| 22  | Puget Sound            | 23-5          | 141    |       | 8    |
| 23  | Maryville (Tenn.)      | 21-8          | 135    |       | -    |
| 24  | Augustana              | 23-6          | 126    |       | 11   |
| 25  | UW-Stevens Point       | 17-10         | 122    |       | -    |

## INDIVIDUAL GAME STATISTICAL LEADERS

### 2005-06 Season

**Double-Figure Scoring:** Hoeg (22), Zylstra (15), Kossoris (6), Thompson (4), Olson (3), James (3), Kelly (2), Pearson (1)

**Scored 15 or More Points:** Hoeg (18), Zylstra (4), Pearson (1), Kossoris (1), Thompson (1)

**Scored 20 or More Points:** Hoeg (6), Zylstra (3), Kossoris (1)

**Led Team in Rebounding (including ties):** Zylstra (12), James (10), Hoeg (6), Kossoris (5), Maas (2), Thompson (1), Kelly (1)

**Double-Figure Rebounding:** James (1)

**Led the Team in Assists (including ties):** Thompson (18), Hoeg (4), Kossoris (3), Hall (1), Glaeser (1)

**Led the Team in Steals (including ties):** Thompson (8), Hoeg (7), Maas (4), Glaeser (3), James (3), Pearson (2), Kelly (2), Elling (1), Zylstra (1)

### The Last Time

**River Falls Won in Overtime:** Feb. 2, 2004 River Falls defeated Superior 79-76 in overtime behind 32 points from Rich Melzer.

**River Falls Lost in Overtime:** Feb. 15, 2005. LaCrosse defeated River Falls 80-75 in double overtime in the WIAC Tournament. Ryan Zylstra put up a game high 26 points.

**River Falls Scored Over 100 Points:** Nov. 22, 2003. The Falcons scored 102 points in a 104-102 defeat at Puget Sound. Rich Melzer led the team with 37 points.

**River Falls Held a Team to Fewer Than 50 Points:**

Jan. 18, 2005. River Falls defeated Eau Claire 42-41. The Falcons held Eau Claire to 11 points in the second half.

**River Falls Was Held to Fewer than 50 points:** Feb. 1, 2006. The Falcons lost at home to Stout, 63-49.

**River Falls Had a Player Score 25 Points or More:** Feb. 15, 2006. Center Ryan Zylstra scored 26 points on 11-17 shooting in a 80-75 double overtime defeat to La Crosse.

**River Falls Had a Player Score 30 Points or More:** Jan. 25, 2006. Hans Hoeg scored 31 points in a 75-60 victory over Superior.

**River Falls Had a Player Score 35 Points or More:** Nov. 22, 2003. Rich Melzer scored 37 points on 17-25 shooting in a 104-102 defeat at Puget Sound.

**River Falls Had a Player Score 50 Points or More:** Jan. 29, 2003. Rich Melzer scored 54 points in an 81-65 win at La Crosse.

**River Falls Has a Player Score 70 Points or More:** Nate DeLong vs. Winona scored 72 points.

**River Falls Had 4 Players Score in Double Figures:** Nov. 27, 2005. Four Falcons scored in double figures, led by Jeff Holt with 20 in a 81-73 victory over Macalester. Eric Kossoris (19), Hans Hoeg (14) and Dan Torrez (12) also scored in double figures.

**River Falls Had a Player Record a Double-Double in Points and Rebounds:** Jan. 11, 2005. Hans Hoeg recorded 21 points and 13 rebounds in a 73-68 victory over Superior.

**River Falls Had a Player Record a Double-Double in Points and Assists:** Jan. 25, 2006. Ryan Thompson recorded 12 points and 10 assists in a 75-60 victory over Superior.

**River Falls Had a Player Record 5+ Steals in a Game:** Nov. 21, 2003. Chris Becker recorded 5 steals vs. Pacific Lutheran

**River Falls Had a Player Record 5+ Blocks in a Game:** Feb. 23, 2004. Rich Melzer recorded 5 blocked shots vs. Eau Claire.



Falcon Ryan Thompson led the WIAC in assists in 2006 with 112.

# Career, Individual Statistics

## Erik Olson - #3

G, 6-4, 185, So., South Strafford, VT/Hanover

| Year    | G  | FG | FGA | PCT  | 3FG | FGA | PCT  | FT | FTA | PCT   | REB | AVE | A | TO | BS | ST | PTS | AVE |
|---------|----|----|-----|------|-----|-----|------|----|-----|-------|-----|-----|---|----|----|----|-----|-----|
| 2005-06 | 21 | 21 | 45  | .467 | 14  | 32  | .438 | 4  | 4   | 1.000 | 22  | 1.0 | 9 | 12 | 6  | 7  | 60  | 2.9 |



## Ryan Thompson - #4

G, 6-0, 190, Jr., Viroqua, WI

| Year         | G         | FG        | FGA        | PCT         | 3FG       | FGA        | PCT         | FT        | FTA       | PCT         | REB       | AVE        | A          | TO        | BS       | ST        | PTS        | AVE        |
|--------------|-----------|-----------|------------|-------------|-----------|------------|-------------|-----------|-----------|-------------|-----------|------------|------------|-----------|----------|-----------|------------|------------|
| 2005-06      | 25        | 56        | 149        | .376        | 24        | 78         | .308        | 16        | 18        | .889        | 45        | 1.8        | 112        | 66        | 3        | 25        | 152        | 6.1        |
| 2004-05      | 25        | 19        | 73         | .260        | 5         | 37         | .135        | 10        | 13        | .769        | 32        | 1.3        | 51         | 29        | 1        | 18        | 53         | 2.1        |
| <b>Total</b> | <b>50</b> | <b>75</b> | <b>222</b> | <b>.337</b> | <b>29</b> | <b>115</b> | <b>.252</b> | <b>26</b> | <b>31</b> | <b>.838</b> | <b>77</b> | <b>1.5</b> | <b>163</b> | <b>95</b> | <b>4</b> | <b>43</b> | <b>205</b> | <b>4.1</b> |



## Scott Kelly - #5

F, 6-5, 220, Jr., Hastings, MN

| Year         | G         | FG        | FGA        | PCT         | 3FG       | FGA        | PCT         | FT        | FTA       | PCT         | REB       | AVE        | A         | PF        | PTS      | AVE       |            |            |
|--------------|-----------|-----------|------------|-------------|-----------|------------|-------------|-----------|-----------|-------------|-----------|------------|-----------|-----------|----------|-----------|------------|------------|
| 2005-06      | 25        | 34        | 90         | .378        | 15        | 53         | .283        | 23        | 30        | .767        | 50        | 2.0        | 21        | 30        | 6        | 10        | 106        | 4.2        |
| 2004-05      | 23        | 31        | 73         | .425        | 21        | 51         | .412        | 8         | 16        | .500        | 47        | 2.0        | 21        | 16        | 0        | 9         | 91         | 4.0        |
| <b>Total</b> | <b>48</b> | <b>65</b> | <b>163</b> | <b>.398</b> | <b>36</b> | <b>104</b> | <b>.346</b> | <b>31</b> | <b>46</b> | <b>.673</b> | <b>97</b> | <b>2.0</b> | <b>42</b> | <b>46</b> | <b>6</b> | <b>19</b> | <b>197</b> | <b>4.1</b> |



## Maurice Baker - #10

G, 6-2, 170, Fr., Riverside, CA/Canyon Springs

| Year | G | FG | FGA | PCT | 3FG | FGA | PCT | FT | FTA | PCT | REB | AVE | A | PF | PTS | AVE |
|------|---|----|-----|-----|-----|-----|-----|----|-----|-----|-----|-----|---|----|-----|-----|
|------|---|----|-----|-----|-----|-----|-----|----|-----|-----|-----|-----|---|----|-----|-----|



## Jontae Koonkaew - #12

G, 5-8, 165, Fr., Apple Valley, MN

| Year | G | FG | FGA | PCT | 3FG | FGA | PCT | FT | FTA | PCT | REB | AVE | A | PF | PTS | AVE |
|------|---|----|-----|-----|-----|-----|-----|----|-----|-----|-----|-----|---|----|-----|-----|
|------|---|----|-----|-----|-----|-----|-----|----|-----|-----|-----|-----|---|----|-----|-----|



Visit the Falcons on The Web

[www.uwrf.edu/sports/sports0607/mbb\\_menu.htm](http://www.uwrf.edu/sports/sports0607/mbb_menu.htm)

## Career, Individual Statistics

### Nicholas Myers - #15

G, 6-3, 180, Jr., Rosemount, MN/Mesabi CC

| Year | G | FG | FGA | PCT | 3FG | FGA | PCT | FT | FTA | PCT | REB | AVE | A | PF | PTS | AVE |
|------|---|----|-----|-----|-----|-----|-----|----|-----|-----|-----|-----|---|----|-----|-----|
|------|---|----|-----|-----|-----|-----|-----|----|-----|-----|-----|-----|---|----|-----|-----|



### Jesse Elling - #21

G, 6-0, 185, So., River Falls, WI

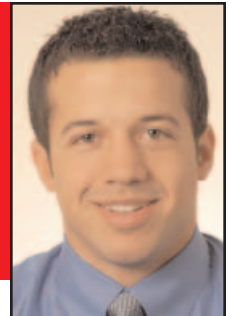
| Year    | G  | FG | FGA | PCT  | 3FG | FGA | PCT  | FT | FTA | PCT  | REB | AVE | A | TO | BS | ST | PTS | AVE |
|---------|----|----|-----|------|-----|-----|------|----|-----|------|-----|-----|---|----|----|----|-----|-----|
| 2005-06 | 10 | 2  | 9   | .222 | 1   | 5   | .200 | 4  | 5   | .800 | 5   | .5  | 1 | 0  | 1  | 1  | 9   | .9  |



### Anthony Williams - #22

G, 6-1, 215, Fr., Cottage Grove, MN/Park

| Year | G | FG | FGA | PCT | 3FG | FGA | PCT | FT | FTA | PCT | REB | AVE | A | PF | PTS | AVE |
|------|---|----|-----|-----|-----|-----|-----|----|-----|-----|-----|-----|---|----|-----|-----|
|------|---|----|-----|-----|-----|-----|-----|----|-----|-----|-----|-----|---|----|-----|-----|



### Deonte Compton - #23

G, 5-10, 170, Fr., Minneapolis, MN/South

| Year | G | FG | FGA | PCT | 3FG | FGA | PCT | FT | FTA | PCT | REB | AVE | A | PF | PTS | AVE |
|------|---|----|-----|-----|-----|-----|-----|----|-----|-----|-----|-----|---|----|-----|-----|
|------|---|----|-----|-----|-----|-----|-----|----|-----|-----|-----|-----|---|----|-----|-----|



### Tim Pearson - #32

F, 6-5, 190, Jr., Eau Claire, WI/Memorial

| Year         | G         | FG        | FGA       | PCT         | 3FG      | FGA       | PCT         | FT        | FTA       | PCT         | REB       | AVE        | A         | PF        | PTS      | AVE       |           |            |
|--------------|-----------|-----------|-----------|-------------|----------|-----------|-------------|-----------|-----------|-------------|-----------|------------|-----------|-----------|----------|-----------|-----------|------------|
| 2005-06      | 17        | 16        | 43        | .372        | 5        | 18        | .278        | 10        | 18        | .556        | 24        | 1.4        | 12        | 13        | 3        | 9         | 47        | 2.8        |
| 2004-05      | 9         | 6         | 15        | .400        | 3        | 8         | .375        | 1         | 3         | .333        | 7         | .8         | 2         | 2         | 0        | 1         | 16        | 1.8        |
| <b>Total</b> | <b>26</b> | <b>22</b> | <b>58</b> | <b>.379</b> | <b>8</b> | <b>26</b> | <b>.307</b> | <b>11</b> | <b>21</b> | <b>.523</b> | <b>31</b> | <b>1.1</b> | <b>14</b> | <b>15</b> | <b>3</b> | <b>10</b> | <b>63</b> | <b>2.4</b> |



Visit the Falcons on The Web

[www.uwrf.edu/sports/sports0607/mbb\\_menu.htm](http://www.uwrf.edu/sports/sports0607/mbb_menu.htm)

## Career, Individual Statistics

### Cory Rondeau - #33

F, 6-7, 230, Jr. , Grand Rapids, MN

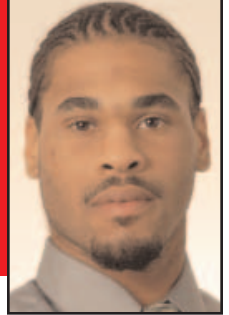
| Year         | G         | FG        | FGA       | PCT         | 3FG      | FGA      | PCT         | FT       | FTA       | PCT         | REB       | AVE        | A        | TO       | BS       | ST       | PTS       | AVE        |
|--------------|-----------|-----------|-----------|-------------|----------|----------|-------------|----------|-----------|-------------|-----------|------------|----------|----------|----------|----------|-----------|------------|
| 2005-06      | 25        | 13        | 21        | .619        | 0        | 0        | .000        | 7        | 10        | .700        | 37        | 1.5        | 4        | 5        | 5        | 3        | 33        | 1.3        |
| 2004-05      | 5         | 0         | 4         | .000        | 0        | 0        | .000        | 1        | 3         | .333        | 0         | .0         | 0        | 2        | 0        | 0        | 1         | .2         |
| <b>Total</b> | <b>30</b> | <b>13</b> | <b>25</b> | <b>.520</b> | <b>0</b> | <b>0</b> | <b>.000</b> | <b>8</b> | <b>13</b> | <b>.615</b> | <b>37</b> | <b>1.2</b> | <b>4</b> | <b>7</b> | <b>5</b> | <b>3</b> | <b>34</b> | <b>1.1</b> |



### Courtney Davis - #34

G, 6-2, 200, Jr., Milwaukee, WI/Mesabi CC

| Year | G | FG | FGA | PCT | 3FG | FGA | PCT | FT | FTA | PCT | REB | AVE | A | PF | PTS | AVE |
|------|---|----|-----|-----|-----|-----|-----|----|-----|-----|-----|-----|---|----|-----|-----|
|------|---|----|-----|-----|-----|-----|-----|----|-----|-----|-----|-----|---|----|-----|-----|



### Jake Voeltz - #35

F, 6-4, 200, Fr., River Falls, WI

| Year | G | FG | FGA | PCT | 3FG | FGA | PCT | FT | FTA | PCT | REB | AVE | A | PF | PTS | AVE |
|------|---|----|-----|-----|-----|-----|-----|----|-----|-----|-----|-----|---|----|-----|-----|
|------|---|----|-----|-----|-----|-----|-----|----|-----|-----|-----|-----|---|----|-----|-----|



### Rory Trimbo - #40

F, 6-6, 250, So., Belle Plaine, MN

| Year    | G | FG | FGA | PCT  | 3FG | FGA | PCT  | FT | FTA | PCT  | REB | AVE | A | TO | BS | ST | PTS | AVE |
|---------|---|----|-----|------|-----|-----|------|----|-----|------|-----|-----|---|----|----|----|-----|-----|
| 2005-06 | 4 | 0  | 0   | .000 | 0   | 0   | .000 | 3  | 5   | .600 | 3   | .8  | 0 | 0  | 0  | 0  | 3   | .8  |



### Nate Robertson - #41

F, 6-7, 220, Fr., Forest Lake, MN

| Year | G | FG | FGA | PCT | 3FG | FGA | PCT | FT | FTA | PCT | REB | AVE | A | PF | PTS | AVE |
|------|---|----|-----|-----|-----|-----|-----|----|-----|-----|-----|-----|---|----|-----|-----|
|------|---|----|-----|-----|-----|-----|-----|----|-----|-----|-----|-----|---|----|-----|-----|



**Visit the Falcons on The Web**

**[www.uwrf.edu/sports/sports0607/mbb\\_menu.htm](http://www.uwrf.edu/sports/sports0607/mbb_menu.htm)**

**UW-River Falls Men's Basketball**  
**UW-River Falls Combined Team Statistics (as of Nov 16, 2006)**  
**All games**

|                            |                |              |              |                |
|----------------------------|----------------|--------------|--------------|----------------|
| <b>RECORD:</b>             | <b>OVERALL</b> | <b>HOME</b>  | <b>AWAY</b>  | <b>NEUTRAL</b> |
| <b>ALL GAMES.....</b>      | <b>(6-19)</b>  | <b>(3-8)</b> | <b>(3-9)</b> | <b>(0-2)</b>   |
| <b>CONFERENCE.....</b>     | <b>(5-11)</b>  | <b>(3-5)</b> | <b>(2-6)</b> | <b>(0-0)</b>   |
| <b>NON-CONFERENCE.....</b> | <b>(1-8)</b>   | <b>(0-3)</b> | <b>(1-3)</b> | <b>(0-2)</b>   |

| ## Player              | GP-GS | Min--Avg | ---TOTAL--- |      | ---3-PTS--- |      | FT-FTA | Pct   | ----REBOUNDS---- |     |     |     | PF | FO | A   | TO | Blk | Stl | Pts | Avg  |
|------------------------|-------|----------|-------------|------|-------------|------|--------|-------|------------------|-----|-----|-----|----|----|-----|----|-----|-----|-----|------|
|                        |       |          | FG-FGA      | Pct  | 3FG-FGA     | Pct  |        |       | Off              | Def | Tot | Avg |    |    |     |    |     |     |     |      |
| 23 Hoeg, Hans.....     | 25-25 | 897 35.9 | 139-309     | .450 | 58-138      | .420 | 96-116 | .828  | 28               | 85  | 113 | 4.5 | 42 | 0  | 39  | 62 | 3   | 32  | 432 | 17.3 |
| 44 Zylstra, Ryan.....  | 25-20 | 503 20.1 | 106-216     | .491 | 1-2         | .500 | 51-76  | .671  | 48               | 62  | 110 | 4.4 | 63 | 2  | 12  | 31 | 22  | 8   | 264 | 10.6 |
| 05 Kossoris, Eric..... | 25-4  | 525 21.0 | 61-167      | .365 | 28-76       | .368 | 20-30  | .667  | 14               | 53  | 67  | 2.7 | 48 | 0  | 31  | 40 | 5   | 14  | 170 | 6.8  |
| 04 Thompson, Ryan..... | 25-20 | 786 31.4 | 56-149      | .376 | 24-78       | .308 | 16-18  | .889  | 3                | 42  | 45  | 1.8 | 37 | 0  | 112 | 66 | 3   | 25  | 152 | 6.1  |
| 22 James, Mark.....    | 25-24 | 635 25.4 | 51-124      | .411 | 9-19        | .474 | 17-32  | .531  | 28               | 78  | 106 | 4.2 | 48 | 0  | 34  | 51 | 10  | 17  | 128 | 5.1  |
| 34 Kelly, Scott.....   | 25-15 | 487 19.5 | 34-90       | .378 | 15-53       | .283 | 23-30  | .767  | 15               | 35  | 50  | 2.0 | 46 | 0  | 21  | 30 | 6   | 10  | 106 | 4.2  |
| 03 Olson, Erik.....    | 21-0  | 185 8.8  | 21-45       | .467 | 14-32       | .438 | 4-4    | 1.000 | 4                | 18  | 22  | 1.0 | 13 | 0  | 9   | 12 | 6   | 7   | 60  | 2.9  |
| 32 Pearson, Tim.....   | 17-2  | 215 12.6 | 16-43       | .372 | 5-18        | .278 | 10-18  | .556  | 8                | 16  | 24  | 1.4 | 32 | 2  | 12  | 13 | 3   | 9   | 47  | 2.8  |
| 33 Maas, Alex.....     | 24-8  | 354 14.8 | 24-69       | .348 | 9-35        | .257 | 6-11   | .545  | 19               | 27  | 46  | 1.9 | 22 | 0  | 11  | 16 | 2   | 24  | 63  | 2.6  |
| 11 Glaeser, Jimmy..... | 11-2  | 85 7.7   | 9-28        | .321 | 5-19        | .263 | 4-6    | .667  | 4                | 4   | 8   | 0.7 | 2  | 0  | 8   | 5  | 0   | 10  | 27  | 2.5  |
| 45 Rondeau, Cory.....  | 25-3  | 214 8.6  | 13-21       | .619 | 0-0         | .000 | 7-10   | .700  | 10               | 27  | 37  | 1.5 | 19 | 0  | 4   | 5  | 5   | 3   | 33  | 1.3  |
| 21 Elling, Jesse.....  | 10-0  | 34 3.4   | 2-9         | .222 | 1-5         | .200 | 4-5    | .800  | 2                | 3   | 5   | 0.5 | 2  | 0  | 1   | 0  | 1   | 1   | 9   | 0.9  |
| 40 Trimbo, Rory.....   | 4-0   | 7 1.8    | 0-0         | .000 | 0-0         | .000 | 3-5    | .600  | 2                | 1   | 3   | 0.8 | 0  | 0  | 0   | 0  | 0   | 0   | 3   | 0.8  |
| 15 Hall, Nick.....     | 15-2  | 104 6.9  | 5-16        | .313 | 1-8         | .125 | 0-0    | .000  | 3                | 6   | 9   | 0.6 | 10 | 0  | 10  | 10 | 0   | 0   | 11  | 0.7  |
| 10 Cowley, Joey.....   | 8-0   | 14 1.8   | 1-4         | .250 | 1-4         | .250 | 0-0    | .000  | 0                | 1   | 1   | 0.1 | 1  | 0  | 0   | 1  | 0   | 0   | 3   | 0.4  |
| 41 Graves, Connor..... | 4-0   | 5 1.3    | 0-1         | .000 | 0-0         | .000 | 0-0    | .000  | 0                | 0   | 0   | 0.0 | 0  | 0  | 0   | 0  | 0   | 0   | 0   | 0.0  |
| TEAM.....              |       |          |             |      |             |      |        |       | 29               | 73  | 102 | 4.1 | 0  |    | 12  |    |     |     |     |      |

|                |    |      |          |      |         |      |         |      |     |     |     |      |     |   |     |     |    |     |      |      |
|----------------|----|------|----------|------|---------|------|---------|------|-----|-----|-----|------|-----|---|-----|-----|----|-----|------|------|
| Total.....     | 25 | 5050 | 538-1291 | .417 | 171-487 | .351 | 261-361 | .723 | 217 | 531 | 748 | 29.9 | 385 | 5 | 304 | 354 | 66 | 160 | 1508 | 60.3 |
| Opponents..... | 25 | 5050 | 596-1358 | .439 | 166-439 | .378 | 284-397 | .715 | 287 | 577 | 864 | 34.6 | 354 | 4 | 301 | 341 | 50 | 177 | 1642 | 65.7 |

| TEAM STATISTICS         | RF       | OPP      | DATE      | OPPONENT            | W/L | SCORE | ATTEND |
|-------------------------|----------|----------|-----------|---------------------|-----|-------|--------|
| SCORING.....            | 1508     | 1642     | Nov. 18   | CONCORDIA-ST. PAUL  | L   | 54-57 | 467    |
| Points per game.....    | 60.3     | 65.7     | 11/19/05  | at Saint John's     | L   | 67-78 | 826    |
| Scoring margin.....     | -5.4     | -        | Nov. 25   | vs Concordia-Irvine | L   | 71-86 | 150    |
| FIELD GOALS-ATT.....    | 538-1291 | 596-1358 | Nov. 26   | vs Westmont College | L   | 67-75 | 150    |
| Field goal pct.....     | .417     | .439     | *Nov. 30  | UW-SUPERIOR         | W   | 61-55 | 366    |
| 3 POINT FG-ATT.....     | 171-487  | 166-439  | *12/3/05  | at UW-Stevens Point | L   | 53-74 | 1172   |
| 3-point FG pct.....     | .351     | .378     | *12/07/05 | at UW-Eau Claire    | L   | 56-57 | 225    |
| 3-pt FG made per game.. | 6.8      | 6.6      | *Dec. 10  | UW-PLATTEVILLE      | L   | 45-58 | 426    |
| FREE THROWS-ATT.....    | 261-361  | 284-397  | 12/14/05  | at Macalester       | L   | 54-62 | 175    |
| Free throw pct.....     | .723     | .715     | 12-16-05  | at Bethany Lutheran | W   | 79-61 | 252    |
| REBOUNDS.....           | 748      | 864      | Dec. 29   | SIMPSON COLLEGE     | L   | 64-65 | 318    |
| Rebounds per game.....  | 29.9     | 34.6     | Dec. 30   | ST. THOMAS          | L   | 53-56 | 157    |
| Rebounding margin.....  | -4.6     | -        | *Jan. 7   | UW-WHITEWATER       | L   | 65-76 | 333    |
| ASSISTS.....            | 304      | 301      | *01/11/06 | at UW-Stout         | W   | 66-57 | 803    |
| Assists per game.....   | 12.2     | 12.0     | *1/14/06  | at UW-Oshkosh       | L   | 49-55 | 887    |
| TURNOVERS.....          | 354      | 341      | *1/18/06  | at UW-La Crosse     | L   | 55-57 | 310    |
| Turnovers per game....  | 14.2     | 13.6     | *Jan. 21  | UW-STEVENSON POINT  | L   | 56-70 | 510    |
| Turnover margin.....    | -0.5     | -        | *1/25/06  | at UW-Superior      | W   | 75-60 | 378    |
| Assist/turnover ratio.. | 0.9      | 0.9      | *Jan. 28  | UW-OSHKOSH          | W   | 58-56 | 573    |
| STEALS.....             | 160      | 177      | *Feb. 1   | UW-STOUT            | L   | 49-63 | 574    |
| Steals per game.....    | 6.4      | 7.1      | *02/04/06 | at UW-Platteville   | L   | 56-70 | 1115   |
| BLOCKS.....             | 66       | 50       | *Feb. 8   | UW-EAU CLAIRE       | W   | 59-57 | 228    |
| Blocks per game.....    | 2.6      | 2.0      | *02/11/06 | at UW-Whitewater    | L   | 56-81 | 1416   |
| WINNING STREAK.....     | 0        | -        | *Feb. 15  | UW-LA CROSSE        | LO2 | 75-80 | 380    |
| Home win streak.....    | 0        | -        | 02/21/06  | at UW-Stout         | L   | 65-75 | 903    |
| ATTENDANCE.....         | 4332     | 8762     |           |                     |     |       |        |
| Home games-Avg/Game...  | 11-394   | 12-705   |           |                     |     |       |        |
| Neutral site-Avg/Game.. | -        | 2-150    |           |                     |     |       |        |

| SCORE BY PERIODS:   | 1st | 2nd | OT | OT2 | Total |
|---------------------|-----|-----|----|-----|-------|
| UW-River Falls..... | 700 | 794 | 7  | 7   | 1508  |
| Opponents.....      | 767 | 855 | 7  | 12  | 1641  |